

The Last Minute

Bass

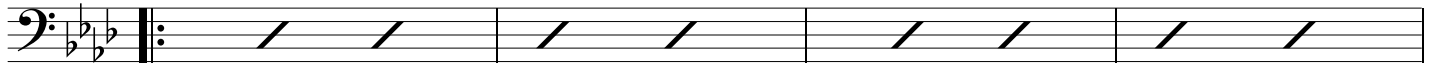
Choro

Composed by Danny Green

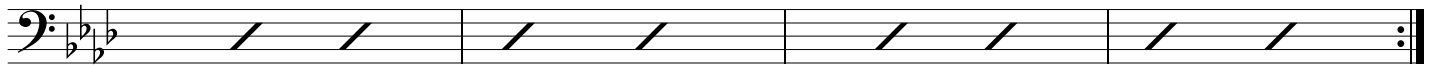


A

Fm C/E D \flat A \flat /C Gm $7\flat 5$ /B \flat Fm/A \flat G 7 C 7



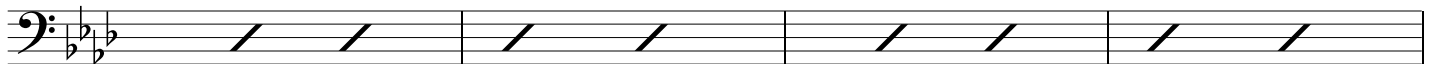
Fm C/E D \flat A \flat /C Gm $7\flat 5$ /B \flat Fm/A \flat G 7 C 7 Fm



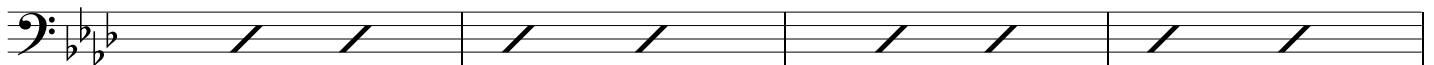
B \flat m 7 E $\flat 7$ A \flat MAJ 7 D \flat MAJ 7



B \flat m 7 E $\flat 7\sharp 9$ A \flat \circ A \flat MAJ 7



D $\flat 9$ A $9\sharp 11$ A \flat MAJ 7 Fm 7



E 9^6



Copyright 2009 Danny Green

www.dannygreen.net

The Last Minute - Bass p.2

Fm C/E D \flat A \flat /C Gm $7^{\flat 5}$ /B \flat Fm/A \flat G 7 C 7



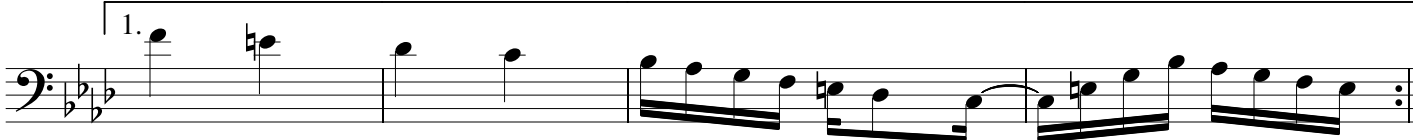
A bass staff in B-flat major with slash marks indicating chord positions for the first system.

Fm C/E D \flat A \flat /C Gm $7^{\flat 5}$ /B \flat Fm/A \flat G 7 C 7 Fm



A bass staff in B-flat major with slash marks indicating chord positions for the second system.

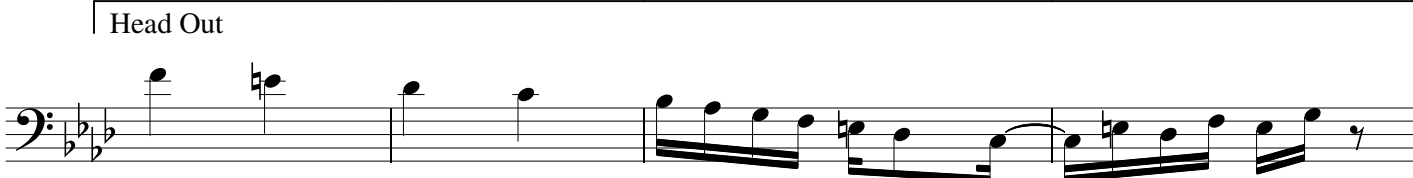
1.



A bass staff with a first ending bracket. The melody starts with a quarter note G 2 , followed by a quarter note A 2 , a quarter note B 2 , and a quarter note C 3 . The rest of the staff contains a complex eighth-note and sixteenth-note pattern.

Back To A for Solos

Head Out



A bass staff with a bracket labeled 'Head Out'. The melody starts with a quarter note G 2 , followed by a quarter note A 2 , a quarter note B 2 , and a quarter note C 3 . The rest of the staff contains a complex eighth-note and sixteenth-note pattern.



A bass staff with a final melodic phrase consisting of eighth and sixteenth notes.